



The Series 300 stainless steel sliding door gear is perfect for use in hygiene-sensitive environments, as well as in harsh weather conditions and salt water exposure.

All components, brackets, track and channels are manufactured from 316 grade stainless steel. The series 300 range is frequently used for large external doors on harbours, commercial, and agricultural buildings.

## Series 300

### Straight Sliding and Conveyor System



Suitable for panels up to 300kg.



Featuring high quality components



Full technical support



Easy to fit

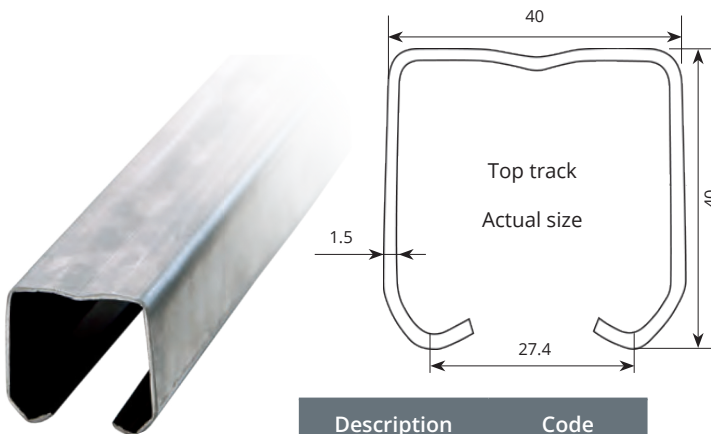
A4  
316 Grade

Manufactured from A4/316 grade stainless steel



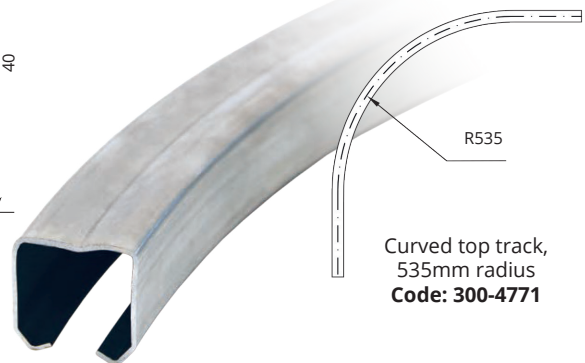
Dependable, durable components that are suited to harsh conditions.

## Series 300 Track components

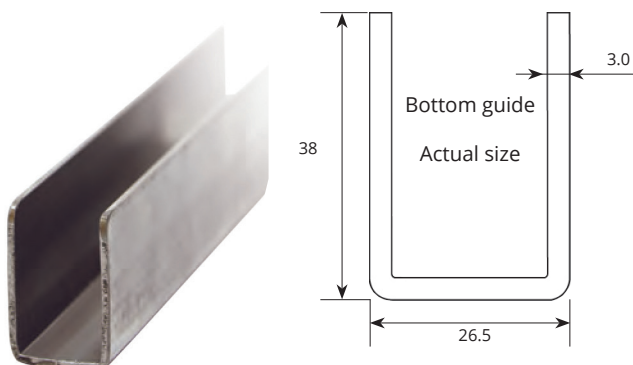


2M Top track  
Code: 300-472-2

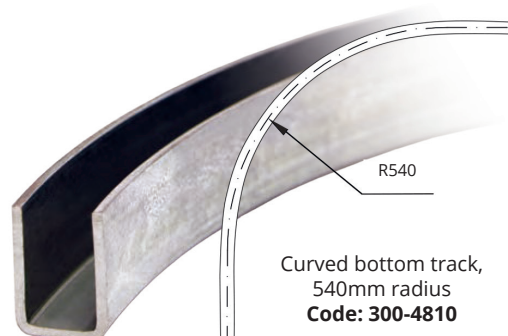
Description	Code
2m Top track	300-472-2
3m Top track	300-472-3



Curved top track,  
535mm radius  
Code: 300-4771

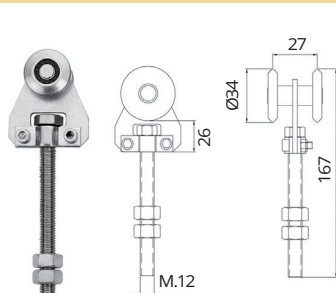


3M Bottom track  
Code: 300-486-3

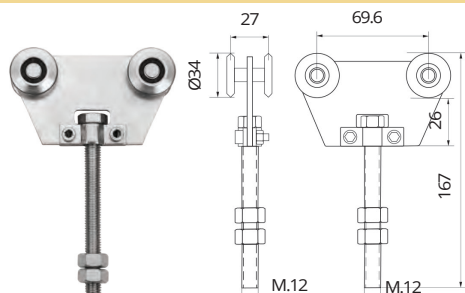


Curved bottom track,  
540mm radius  
Code: 300-4810

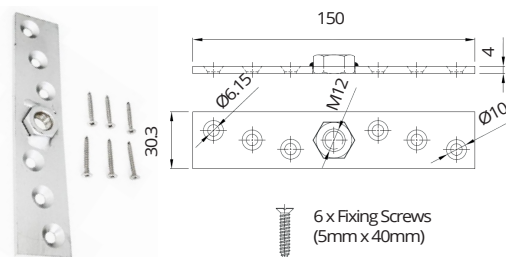
## Series 300 Hangers & rollers



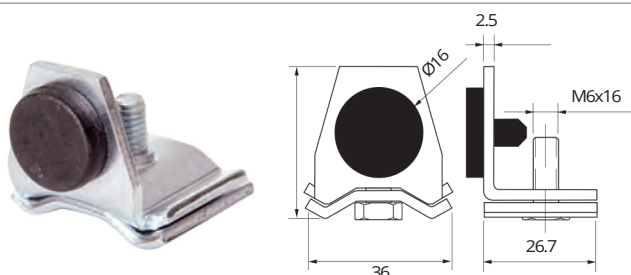
Single axle hanger,  
75kg capacity  
**Code: 300-468**



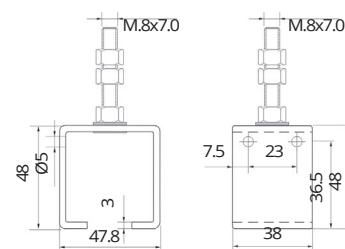
Double axle hanger,  
150kg capacity  
**Code: 300-469**



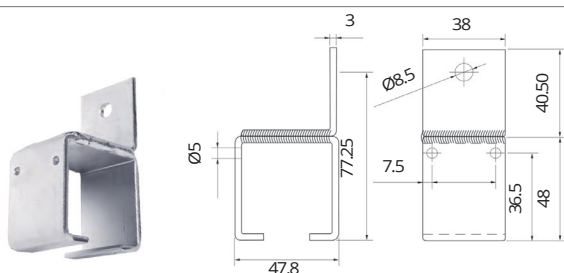
Grade suspension plate set for  
wooden doors, pair  
**Code: 450-46011**



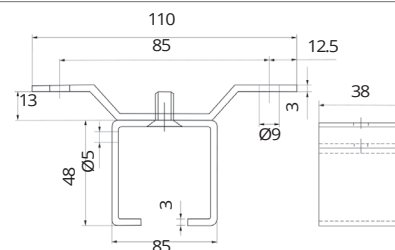
Door stop  
**Code: 300-47812**



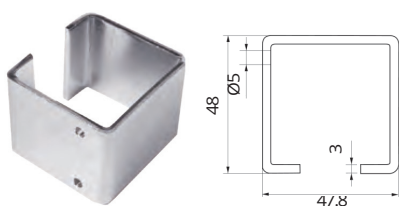
Adjustable bracket  
**Code: 300-47860**



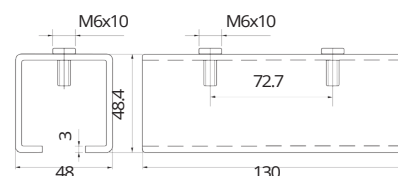
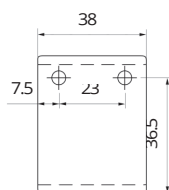
Top track bracket  
face fixing  
**Code: 300-47850**



Soffit bracket,  
316 grade  
**Code: 300-47870**

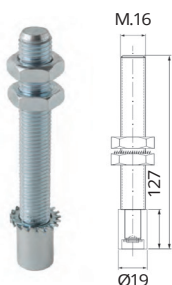


316 Grade weld on bracket  
**Code: 300-47830**



Track connector  
**Code: 300-47811**

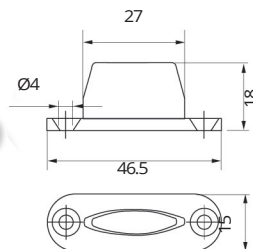
## Series 300 Bottom guides



Bottom guide roller  
with thread  
**Code: 300-791**



Lower nylon guide  
**Code: TS-NG**



Use Polyester resin  
to support your  
anchor studs and bolts  
into hollow walls,  
masonry and  
concrete floors  
**Code: AF1350**