



The Series 2000 is a Heavy Duty Sliding Door Gear designed for industrial and commercial applications, specifically for external sliding doors found in warehouses, garages, and stables.

The Series 2000 features galvanised sliding door tracks for durability and longevity, and can be easily assembled for straight sliding configurations. The 2000 Series sliding door hardware can support doors weighing up to 2000kg.

Series 2000

Straight Sliding System



Suitable for panels up to 2000kg.



Featuring high quality components



Full technical support



Easy to fit



Smooth movement

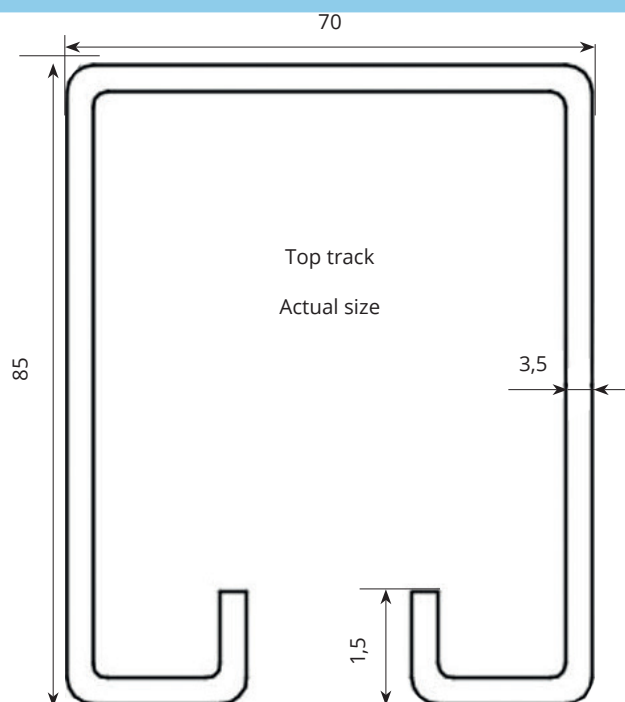


Tough solution, built to last

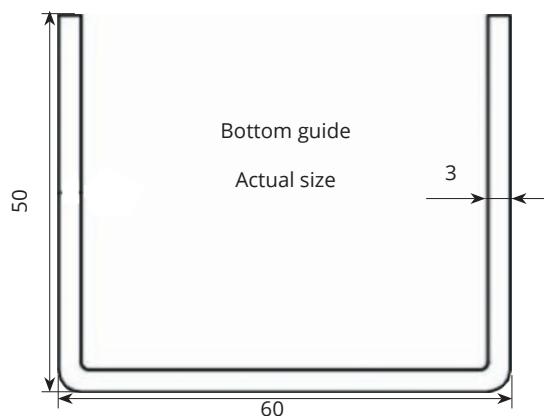
Series 2000 Track components



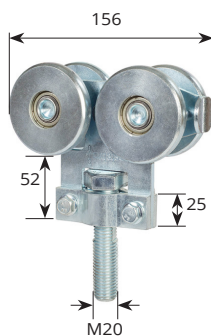
Description	Code
3m Top track	2000-2000-3



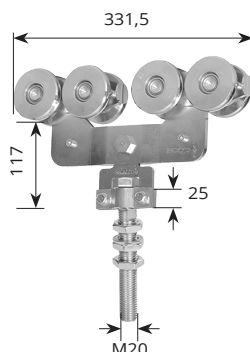
Description	Code
3m Bottom guide	2000-5020



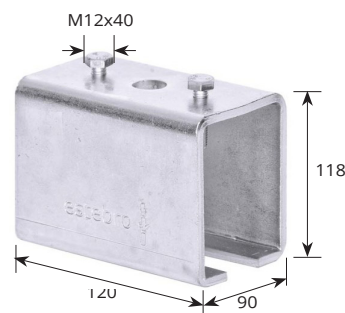
Series 2000 Hangers & rollers/Plates



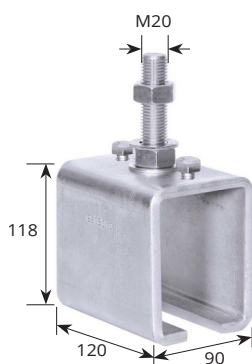
Steel wheel hanger,
M20 x 150mm pin
600kg capacity
Code: 2000-464L



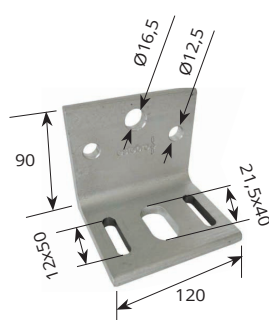
25mm Diameter steel guide
rotating pin on flat plate
1000kg capacity
Code: 2000-465L



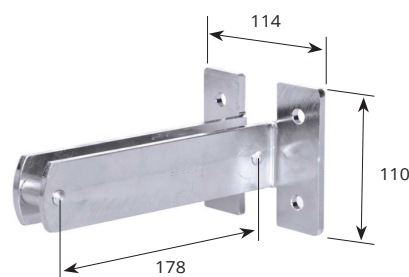
Track connector for
top track
Code: 2000-470010



Adjustable soffit fixing
track support bracket,
M20 x 110mm
Code: 2000-47001L

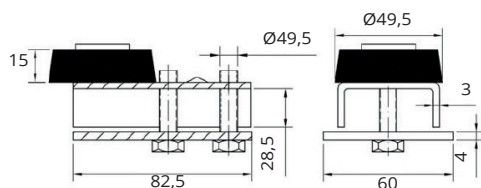


Double face fixing track
support suited to adjustable
soffit fixing
Code: 2000-47002

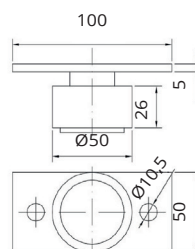


Double face fixing track
support suited to adjustable
soffit fixing bracket
Code: 2000-47003

Series 2000 Track components and guides



Track mounted door stop
Code: 2000-47201



50mm Diameter
nylon bottom guide roller
Code: 2000-5026