



The Series 20 has been designed for lightweight applications such as doors, wardrobes and warehouse partition walls/doors.

Featuring a vast range of hangers and components, the Series 20 is a flexible solution for straight, folding and curved configurations. Series 20 maximum panel weight capacity is 90kg*

Series 20

Sliding/Runway/Bi-folding system



Suitable for panels up to 90kg.



Featuring high quality components



Full technical support



Easy to fit

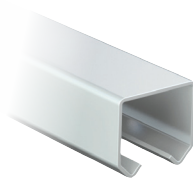
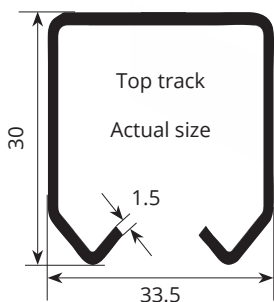


Smooth movement

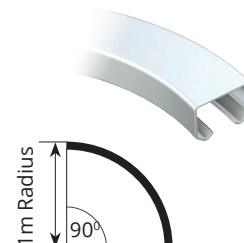


Perfect for interior doors, cupboards or over head runways

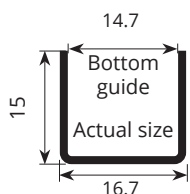
Series 20 Track components



Description	Code
2m Top track	20-20-2
3m Top track	20-20-3
4m Top track	20-20-4
5m Top track	20-20-5
6m Top track	20-20-6

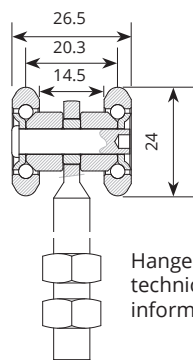


1m Radius curved Top track
Code: 20-285

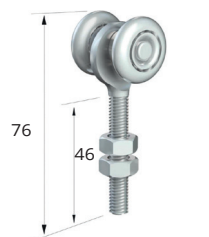


Description	Code
2m Bottom guide	20-239-2
3m Bottom guide	20-239-3
4m Bottom guide	20-239-4
5m Bottom guide	20-239-5
6m Bottom guide	20-239-6

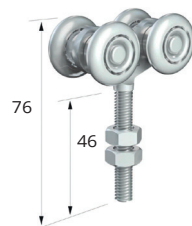
Series 20 Hangers & rollers



Hanger wheel
technical
information



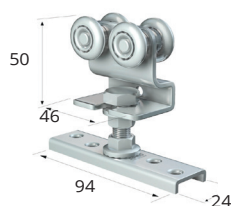
Single axle, M8 x
46mm, 35kg capacity
Code: 20-84



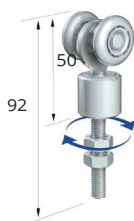
Double axle hanger,
M8 x 46mm, 45kg capacity
Code: 20-85



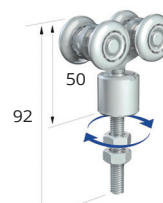
Double axle delrin steel wheel hanger,
M8 x 46mm, 35kg capacity
Code: 20-1285



Single axle wheel hanger with 30x 74mm
cranked mounting plate, 35kg capacity
Code: 20-23



Single axle rotating hanger,
M8 x 46mm, 35kg capacity
Code: 20-86



Double axle rotating hanger,
M8 x 46mm pin, 45kg capacity
Code: 20-87



Single axle, 33 x 66mm
fixing plate, 35kg capacity
Code: 20-1028



Single axle, 40 x 80.5mm
fixing plate, 35kg capacity
Code: 20-1233



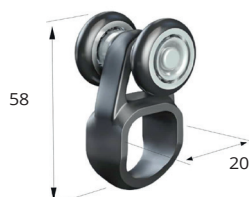
Single axle wheel hanger with 30x 74mm
cranked mounting plate, 35kg capacity
Code: 20-38



Double axle hanger, 50 x
52.5mm fixing plate, 45kg capacity
Code: 20-1086



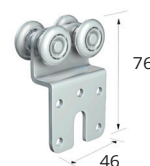
M8 eye nut
BZP
Code: 51363



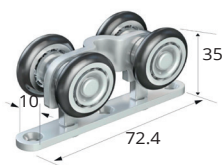
Single axle nylon wheel with fixing
loop, 25kg capacity
Code: 20-901



Single axle rotating nylon
wheel, 30kg capacity
Code: 20-5013



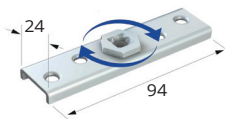
Double axle hanger with 46 x 76mm
mounting plate, 45kg capacity
Code: 20-1109



Double axle nylon wheel,
35kg capacity
Code: 20-5012



Double rotating axle wheel
hanger with pipe clamp, 25kg capacity
Code:
16mm Pipe clamp: 20-1224-016
26mm Pipe clamp: 20-1224-026
32mm Pipe clamp: 20-1224-032



Rotating suspension plate M8,
minimum door thickness: 25mm
Code: 20-88



Angled rotating suspension
plate, M8 thread
Code: 20-1106

Series 20 Brackets & connectors



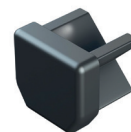
Top track
connector
Code: 20-1293



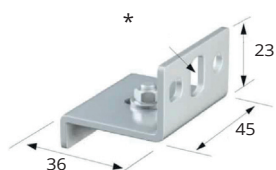
Track mounted
door stop
Code: 20-24



Hook stop
for top track
Code: 20-924



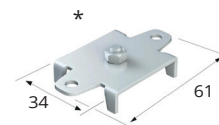
End cap for
top track
Code: 20-925



Face fixing track
support bracket for
top track
Code: 20-25



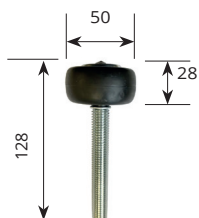
Face fixing closed track
support bracket for
top track
Code: 20-27



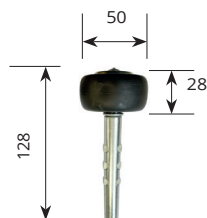
Soffit fixing
track support bracket
Code: 20-26

*When using upper track support brackets they should be fixed at 600 - 1000mm spacing

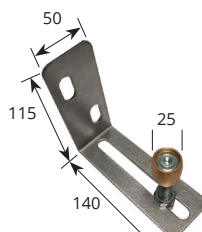
Series 20 Bottom guides



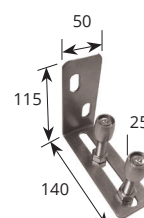
50mm DIA Wheel on M14
shaft c/w 2x M14 nuts
Code: 250-1272



50mm DIA Wheel on
rag bolt shaft
Code: 250-1273



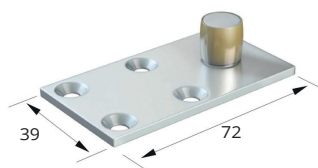
Single bottom guide,
for up to 90mm
Code: 250-271



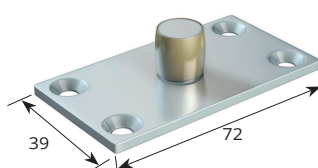
Wall mounted double
guide, for up to 90mm
thick doors
Code: 250-270



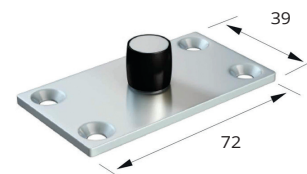
14mm DIA Brass
guide roller
Code: 20-1296



14mm DIA offset
on flat plate
Code: 20-191

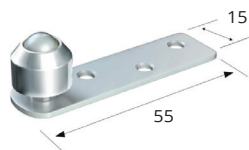


14mm DIA Brass
roller on flat
steel plate
Code: 20-192



14mm DIA Nylon roller
on flat plate
Code: 20-583

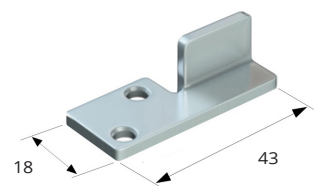
Series 20 Bottom guides



Wall mounted single guide, for up to 90mm thick doors
Code: 20-291



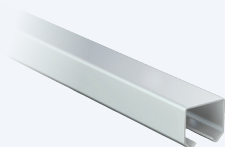
14mm dia. Brass roller on angled plate
Code: 20-43



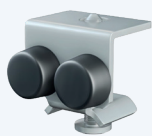
Pressed steel floor fixing steel guide
Code: 20-126

Series 20 Kits (Max door weight 90kg)

6 Metre single door Kit components - **Code: 20-SDKSS6**



2 x 3M track



2 x Door stops



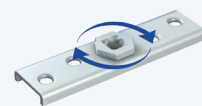
6 x Face fixing brackets



2 x Hangers



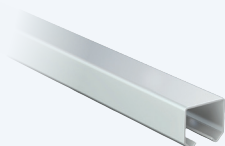
1 x Track connector



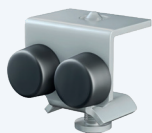
2 x Suspension plates

***Order bottom guides and channel separately - See pages 2 and 4**

6 Metre double door Kit components - **Code: 20-DDKSS6**



2 x 3M Track



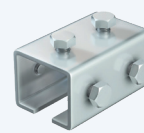
4 x Door stops



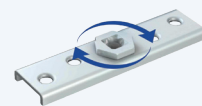
7 x Face fixing brackets



4 x Hangers



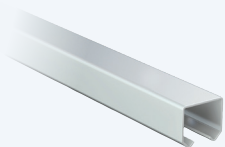
1 x Track connector



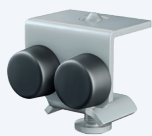
4 x Suspension plates

***Order bottom guides and channel separately - See pages 2 and 4**

5 Metre single door Kit components - **Code: 20-SDKSS5**



1 x 3M Track and 1 x 2M track



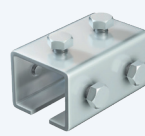
2 x Door stops



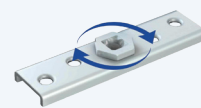
6 x Face fixing brackets



2 x Hangers



1 x Track connector

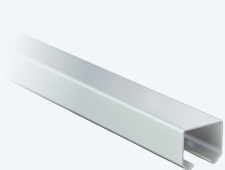


2 x Suspension plates

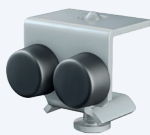
***Order bottom guides and channel separately - See pages 2 and 4**

Series 20 Kits (Max door weight 90kg)

5 Metre double door Kit components - Code: 20-DDKSS5



1 x 3M Track
and 1 x 2M track



4 x Door stops



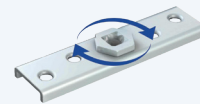
6 x Face fixing
brackets



4 x Hangers



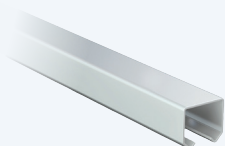
1 x Track
connector



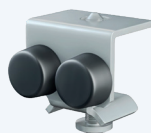
4 x Suspension
plates

*Order bottom guides and channel separately - See pages 2 and 4

4 Metre single door Kit components - Code: 20-SDKSS4



1 x 4M Track



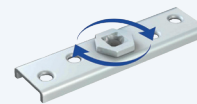
2 x Door stops



5 x Face fixing
brackets



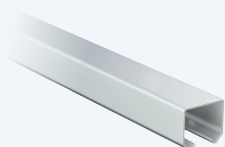
4 x Hangers



2 x Suspension
plates

*Order bottom guides and channel separately - See pages 2 and 4

4 Metre double door Kit components - Code: 20-DDKSS4



1 x 4M Track



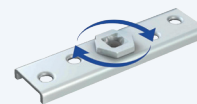
4 x Door stops



5 x Face fixing
brackets



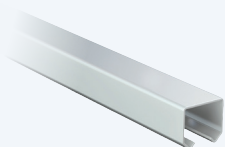
4 x Hangers



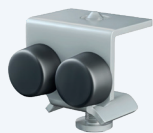
4 x Suspension
plates

*Order bottom guides and channel separately - See pages 2 and 4

3 Metre Single door Kit components - Code: 20-SDKSS3



1 x 3M Track



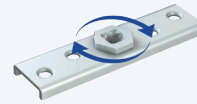
2 x Door stops



4 x Face fixing
brackets

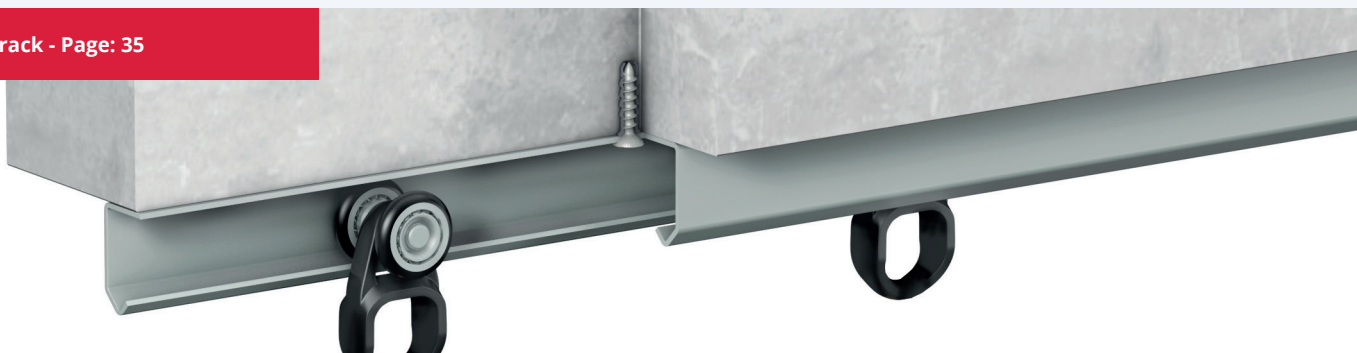


2 x Hangers



2 x Suspension
plates

*Order bottom guides and channel separately - See pages 2 and 4



Series 20 Kits (Max door weight 90kg)

2 Metre single door Kit components - Code: 20-SDKSS2



1 x 2M Track



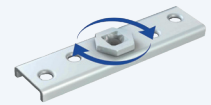
2 x Door stops



3 x Face fixing brackets



2 x Hangers

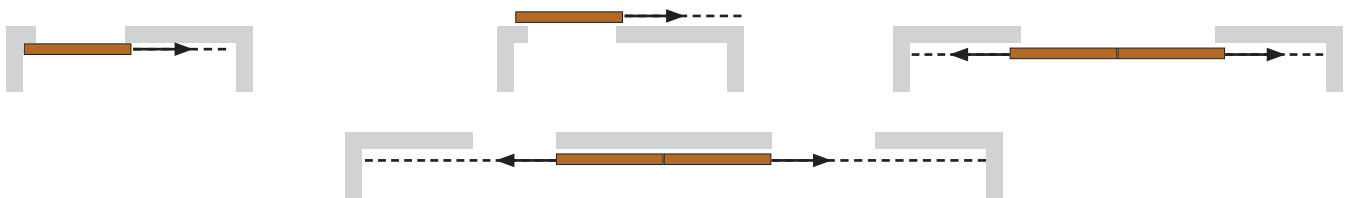


2 x Suspension plates

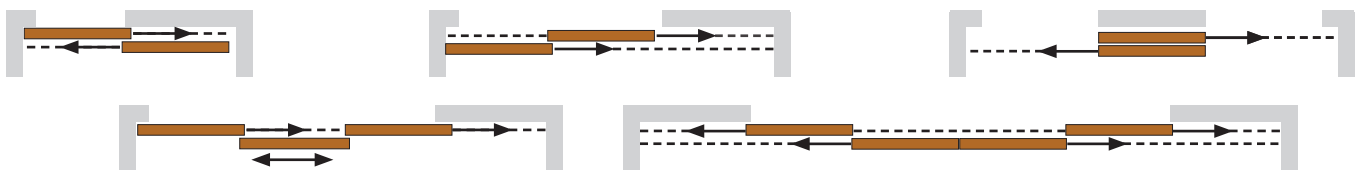
*Order bottom guides and channel separately - See pages 2 and 4

Typical panel configurations

Single track run

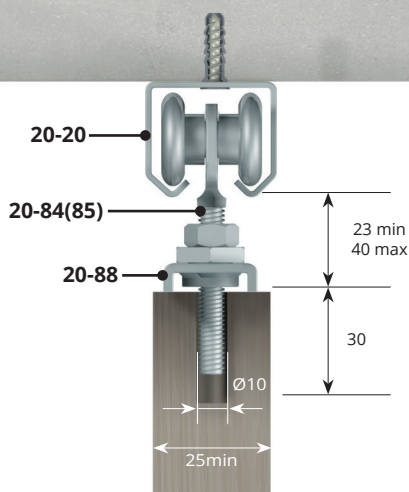


Double track run



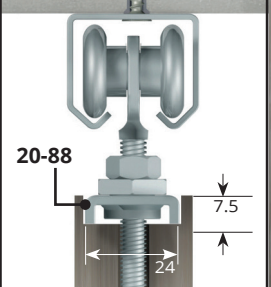
Series 20 Straight sliding applications

Soffit fixing

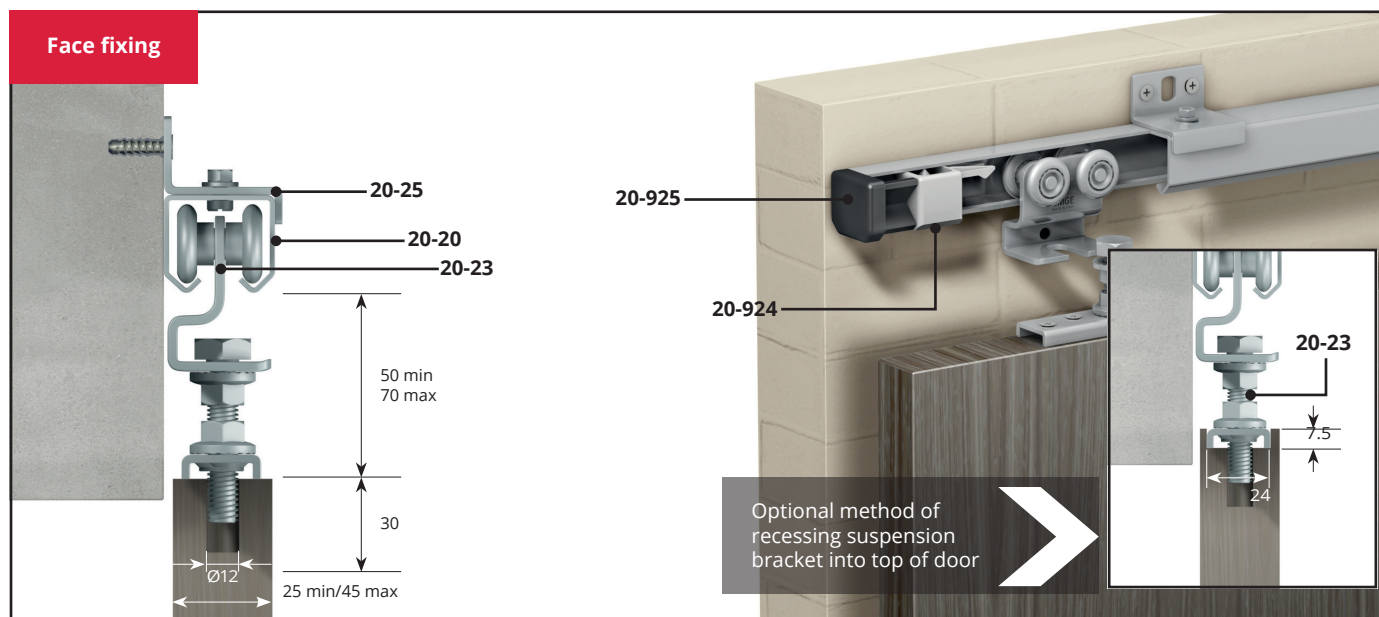


20-24

Optional method of
recessing suspension
bracket into top of door



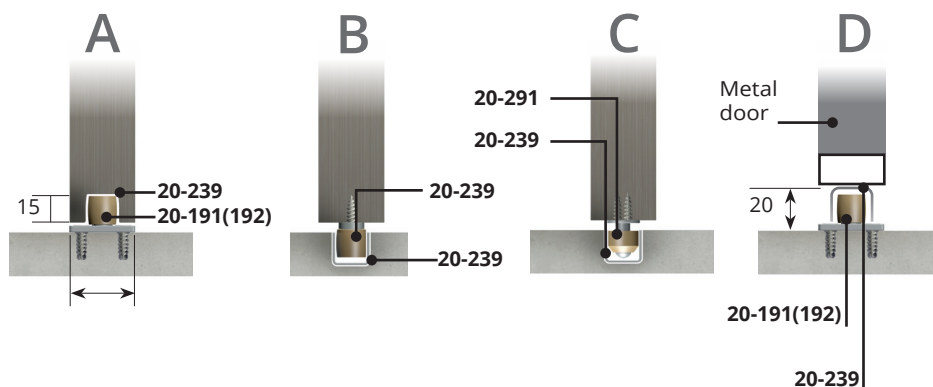
Series 20 Straight sliding application examples



Bottom guide options

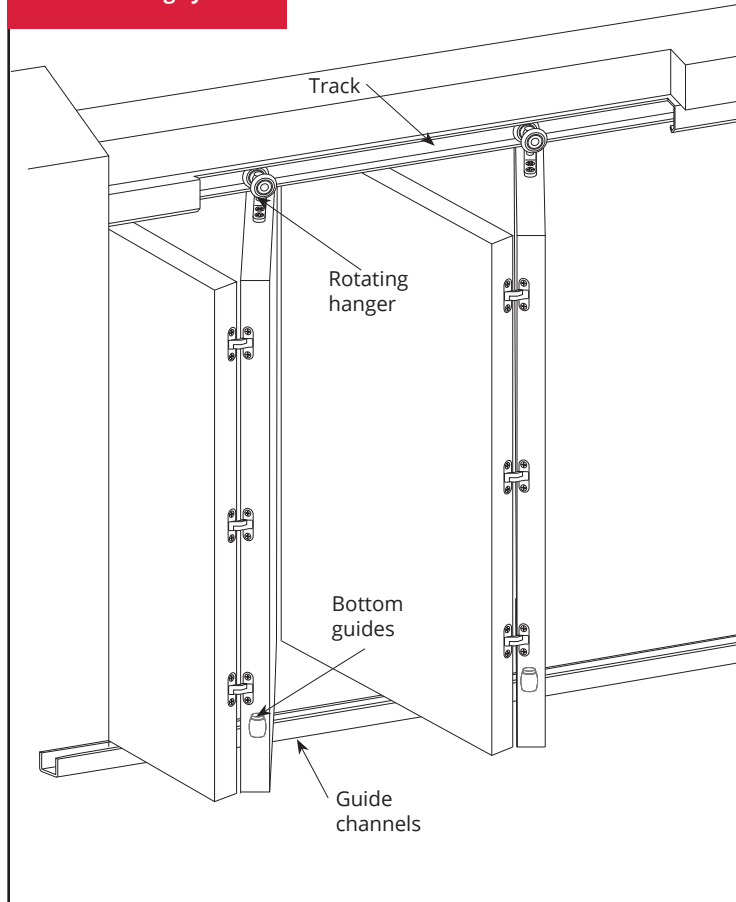
Typical bottom guide configurations for sliding systems (suggestion only).

- A. Guide roller fixed to floor with under guide channel recessed into door bottom.
- B. Screw mounted guide roller fixed to door with under guide channel recessed into floor.
- C. Guide roller on narrow plate fixed to door with under guide channel recessed into floor.
- D. Guide channel fitted to door bottom with guide roller fixed to floor.



Series 20 Centre folding/End folding systems

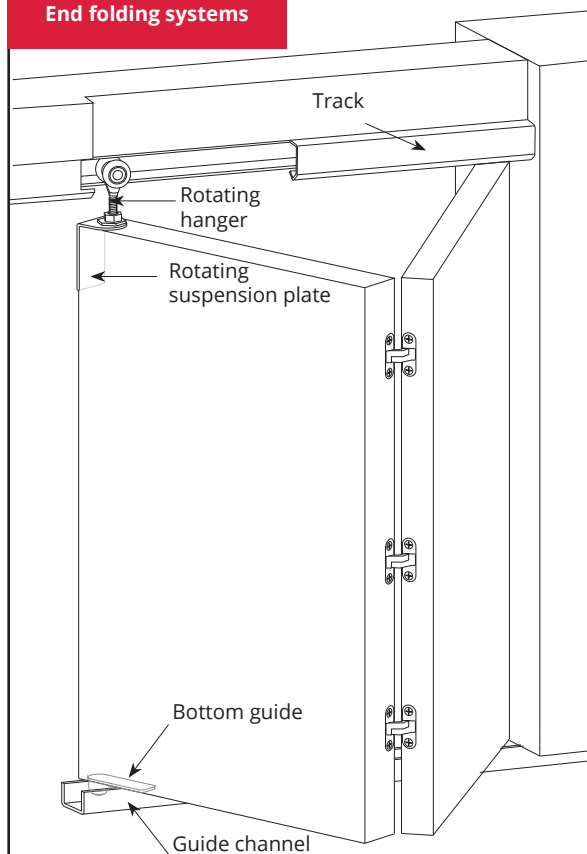
Centre folding systems



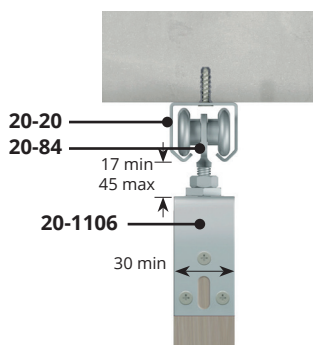
Series 20 centre folding systems are suitable for timber or metal doors with a maximum panel weight up to 35kg (using 2 wheel hangers), or 45kg (using 4 wheeled hangers).



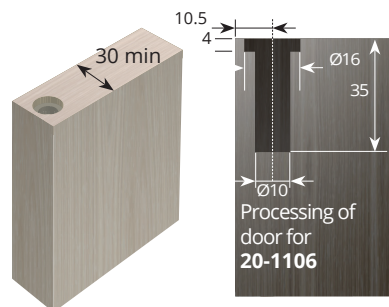
End folding systems



Series 20 End folding systems are suitable for timber or metal doors with a maximum panel weight up to 35 kg (using 2 wheel hangers) or 45kg (using 4 wheel hangers).



Angled rotating suspension plate, M8 thread
Code: 20-1106



Series 20 Centre folding/End folding system technical

NOTE: The width of the door panel which is hinged to the frame (jamb) must be reduced by half the thickness of the door plus half the width of the remaining doors, plus the diameter of the butt hinges.

When using invisible hinges no allowance is necessary for the hinge knuckles. The example below is for a hinge with a 10mm knuckle. Dimensions will vary depending on hinge choice.

Example using 600mm wide x 30mm thick door.

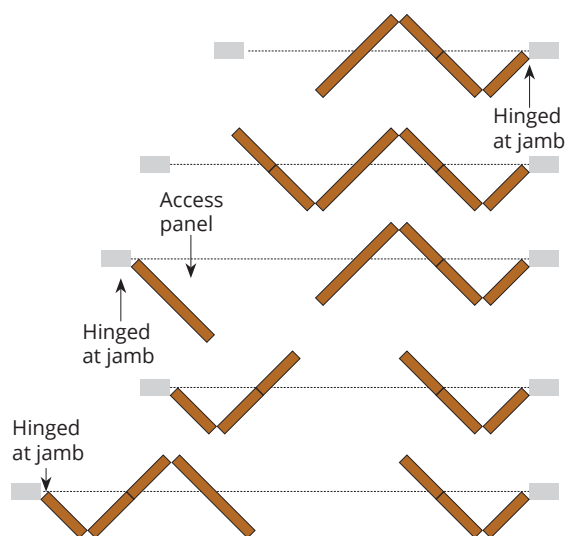
$600\text{mm} \div 2 = 300\text{mm}$, $30\text{mm} \div 2 = 15\text{mm}$;

$300\text{mm} + 15\text{mm} + 10\text{mm}$

$= 325\text{mm}$ reduction in width.

Other typical panel centre folding configurations

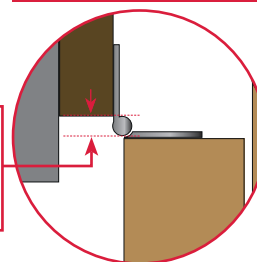
All panels equal width except jamb leaf which must be reduced as shown above.



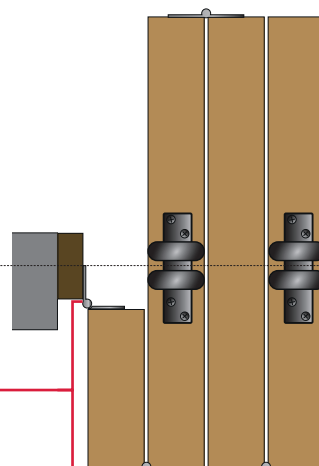
No clearance necessary when using invisible hinges.

Typical plan of 3 1/2 doors

Centre folding systems



Allow clearance for hinge knuckles when using butt hinges.



NOTE: The width of the door panel which is hinged to the frame (jamb) must be reduced by half the thickness of the door plus 14mm, plus the diameter of the hinge knuckle when using butt hinges.

When using invisible hinges no allowance is necessary for the hinge knuckles. The example below is for a hinge with a 10mm knuckle. Dimensions will vary depending on hinge choice.

Example using 30mm thick door.

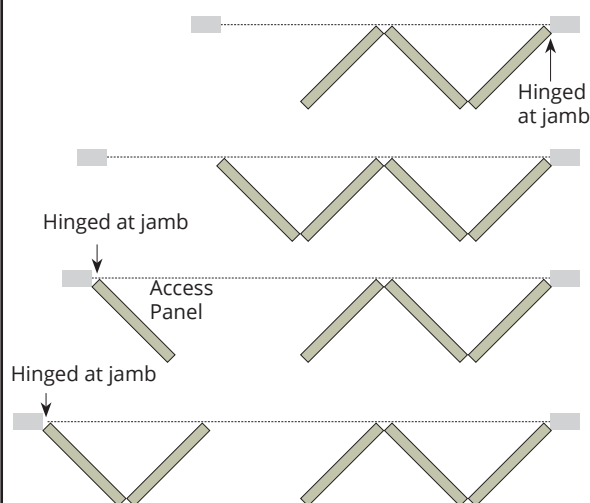
$30\text{mm} \div 2 = 15\text{mm}$

$15\text{mm} + 14\text{mm} + 10\text{mm}$

$= 39\text{mm}$ reduction in width.

Other typical panel centre folding configurations

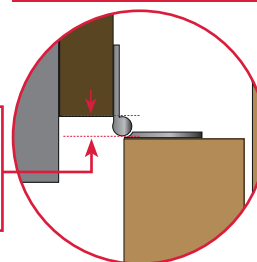
All panels equal width except jamb leaf which must be reduced as shown above.



No clearance necessary when using invisible hinges.

Typical plan of 3 1/2 doors

End folding systems



Allow clearance for hinge knuckles when using butt hinges.

