



The Multirail overhead conveyor system from Runners has been carefully developed to provide effective runway solutions for hundreds of applications including spraybooths, material handling, production lines, abattoirs etc., the possibilities are endless.

# Multirail

## Overhead Conveyor System



Improves operational efficiency



Featuring high quality components



Full technical support



Easy to install

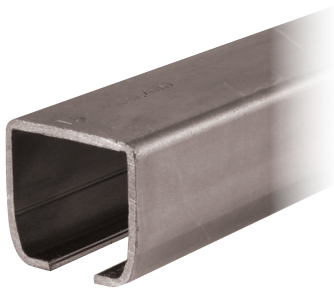


Limitless configurations available

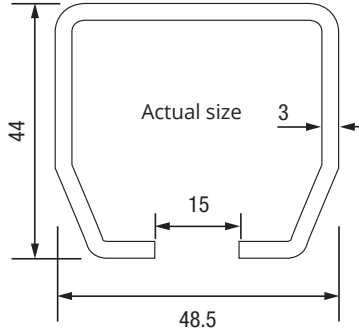


Economical & time saving investment

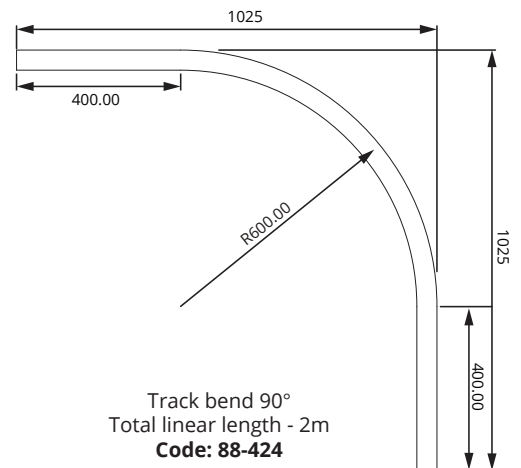
## Multirail Track components



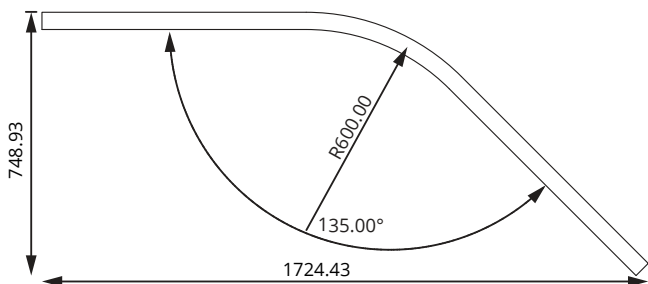
Straight track  
400kg capacity per metre  
**Code: 88-400-3**



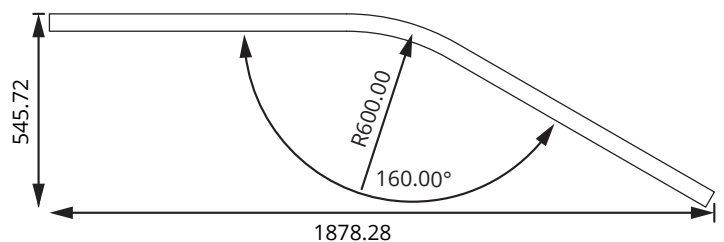
Description	Code
3m track	88-400-3
4m track	88-400-4
5m track	88-400-5



Track bend 90°  
Total linear length - 2m  
**Code: 88-424**

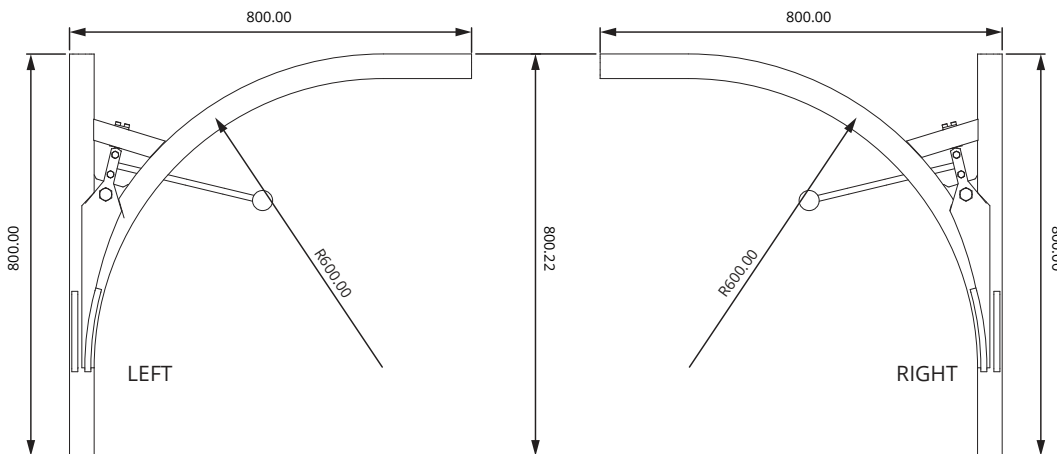


Track bend 45°  
Total linear length - 2m  
**Code: 88-425**



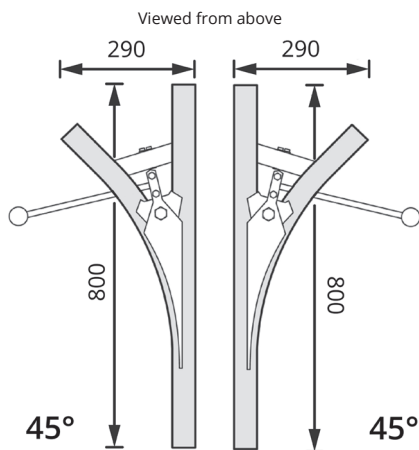
Track bend 30°  
Total linear length - 2m  
**Code: 88-426**

# Multirail Track switches



One direction change  
track switch 90°

Direction	Code
Left	88-453
Right	88-454

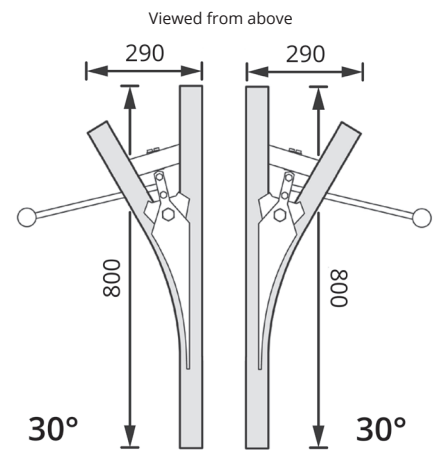


45°

Direction	Code
Left	88-494
Right	88-495

30°

Direction	Code
Left	88-492
Right	88-493

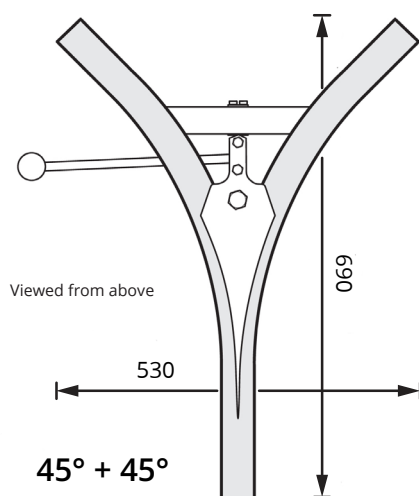


30°

30°

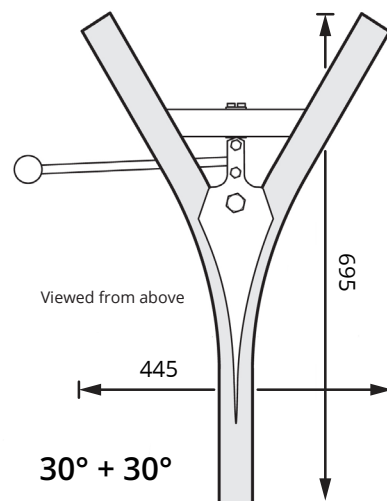
One direction change  
track switch 45°

One direction change  
track switch 30°



45° + 45°

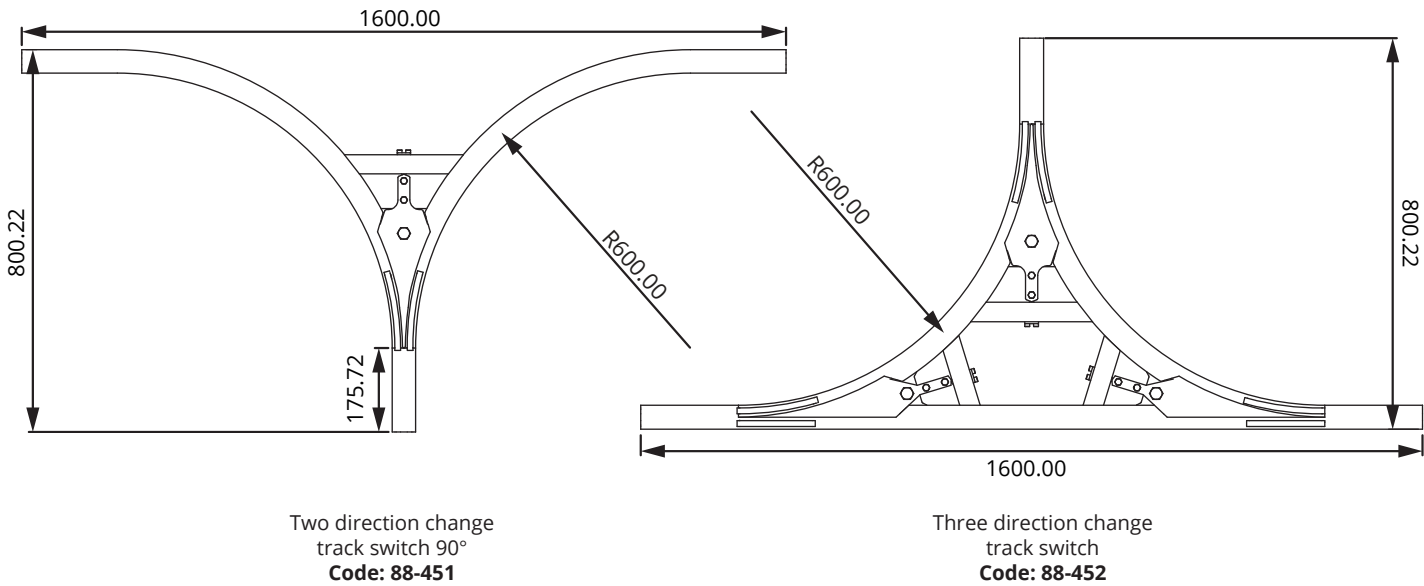
Two direction change  
track switch 45°  
Code: 88-491



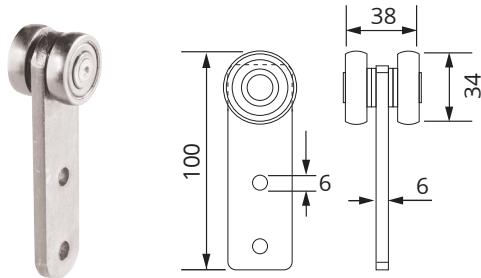
30° + 30°

Two direction change  
track switch 30°  
Code: 88-490

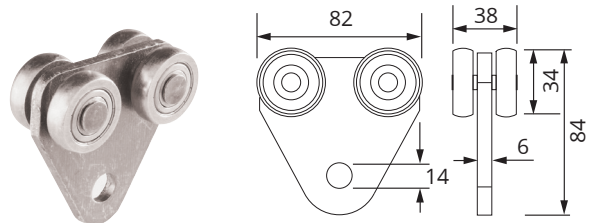
# Multirail Track switches



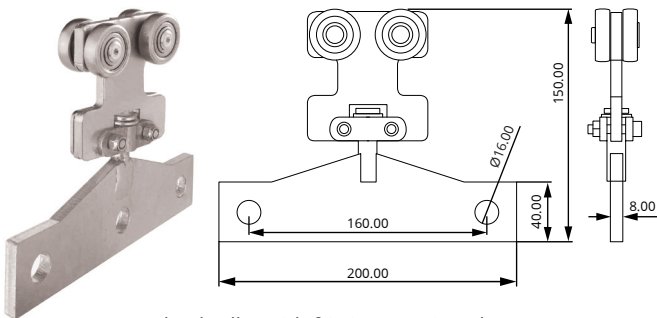
# Multirail Hangers



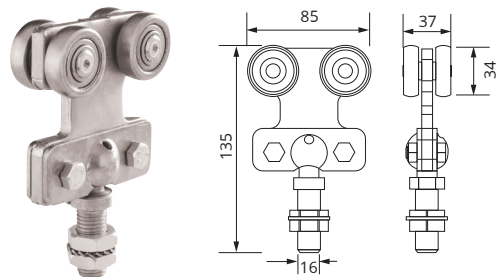
Two wheel fixed hanger  
80kg capacity  
**Code: 88-411**  
High temperature bearing option  
(up to 250°C)  
**Code: 88-411A**



Two wheel fixed hanger  
150kg capacity  
**Code: 88-423**  
High temperature bearing option  
(up to 250°C)  
**Code: 88-432**



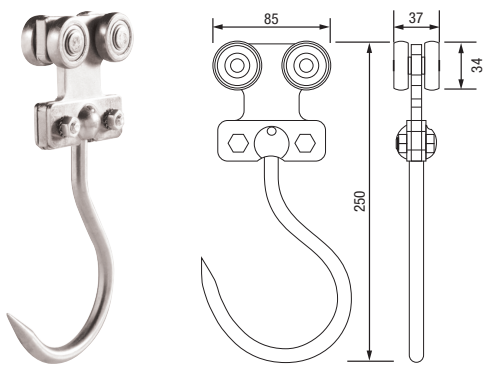
Four wheel roller with friction rotating plate  
150kg capacity  
**Code: 88-419**



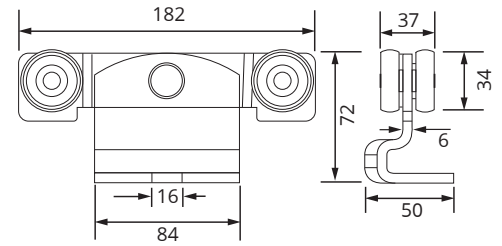
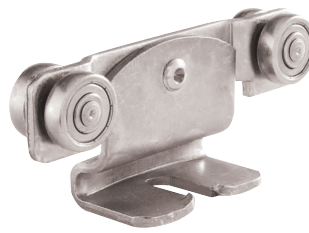
Four wheel rotating hanger  
150kg capacity  
**Code: 88-417**  
High temperature bearing option  
(up to 250°C)  
**Code: 88-418**

Indexing upgrade  
for 88-417  
**Code: 88-417A**

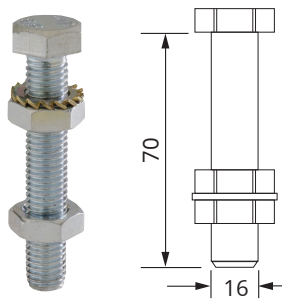
## Multirail Hangers



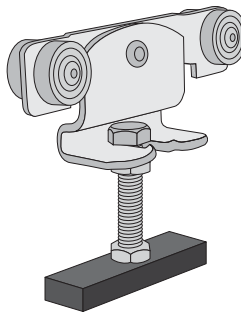
Four wheel rotating hanger with  
stainless steel hook  
150kg capacity  
**Code: 88-422**



Four wheel hanger  
150kg capacity  
**Code: 88-410**

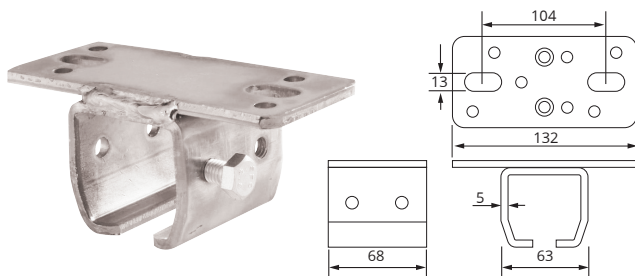


Screw for hanger  
**Code: 88-415**

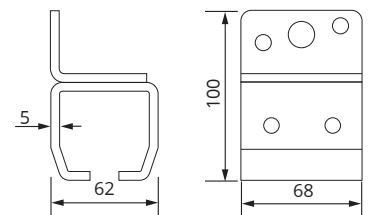
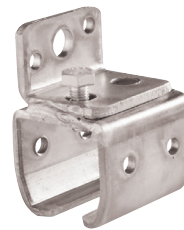


Threaded fitting for welding  
**Code: 88-416**

## Multirail Brackets

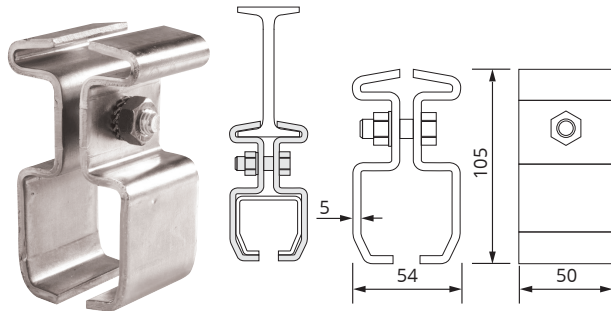


Ceiling support bracket  
**Code: 88-440**

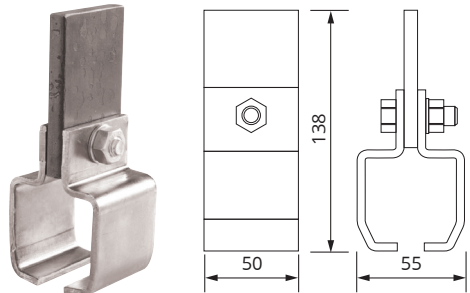


Wall support bracket  
**Code: 88-450**

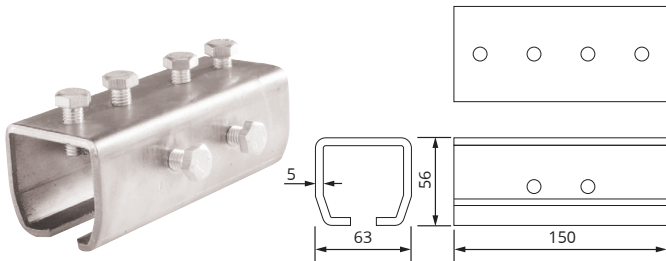
# Multirail Brackets



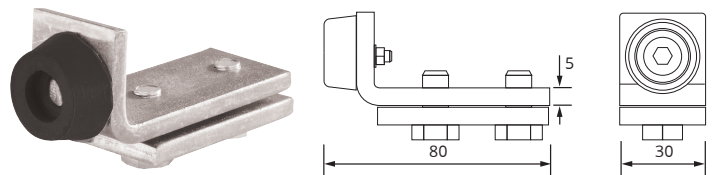
Split suspension bracket  
Code: 88-412



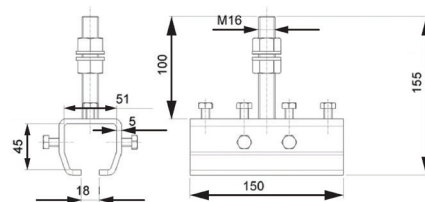
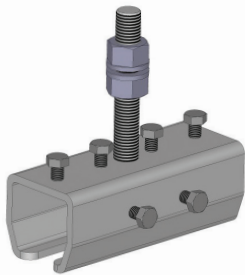
Split suspension bracket for welding  
Code: 88-413



Track joint  
Code: 88-430

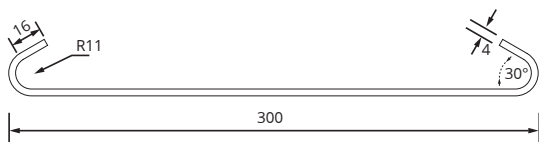


Track stop  
Code: 88-460

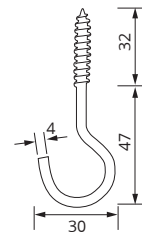


Track connector bracket on M16 stud  
Code: 88-431

# Multirail Accessories



Copper hanging wires (50 pack)  
Code: 88-200



Screw-in Hooks (100 pack)  
Code: SCT483

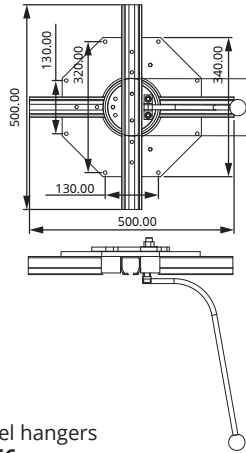
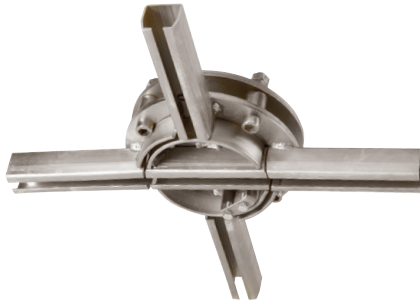
## Channels & Connectors for Quick Installation

Streamline your Multirail installation with our durable channels and connectors.

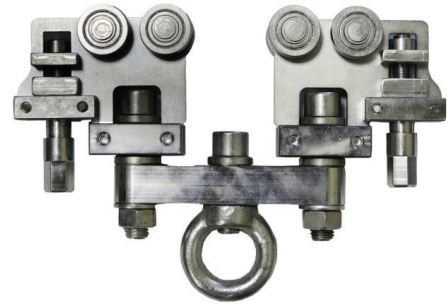
Contact us today to learn more.



# Multirail Turntable



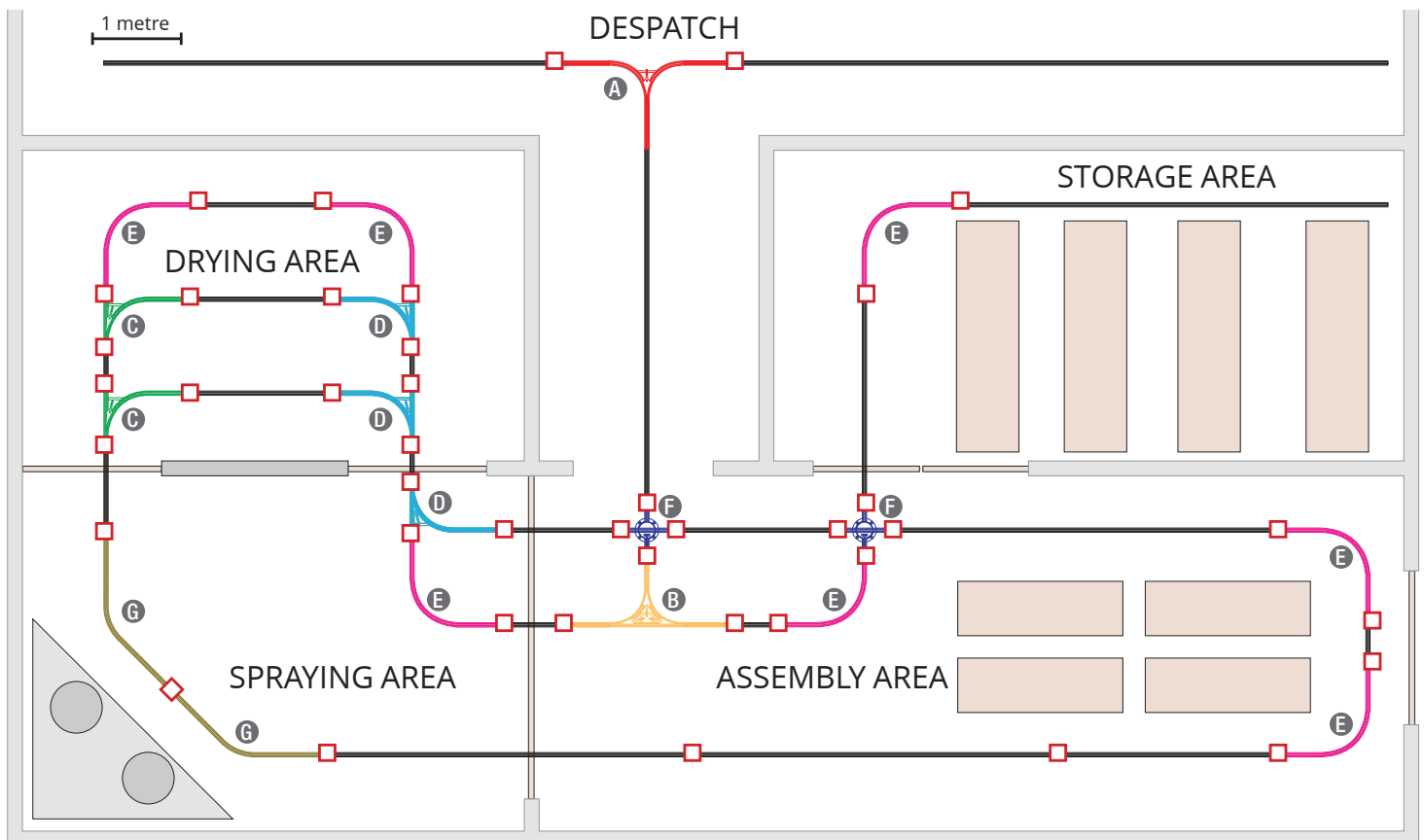
Turntable for 4-wheel hangers  
**Code: 88-456**



Heavy duty locking punch-bag hanger  
**Code: 88-419A**

## Multirail Example Configuration

For assistance with designing and special requirements for your Multirail overhead conveyor system, please contact our technical team.  
**[sales@runners-sales.com](mailto:sales@runners-sales.com)**





# Introducing multirail auto

Multirail Auto is a powered overhead conveyor with drive unit which has been developed to provide runway solutions for applications like paint spray booths, e-commerce packing warehouses, and abattoirs.

- Automated overhead conveyor system, ideal for maximising unused space near the roof.
- Provides efficient material handling, enhancing production speed.
- Operator-friendly controls allow easy stopping, starting, and adjusting from various workstations.
- Easy installation and maintenance.
- Suitable for industries like joinery, paint shops, and abattoirs, guiding products through areas like flow coaters, drying, or processing zones.



Scan for more  
information

